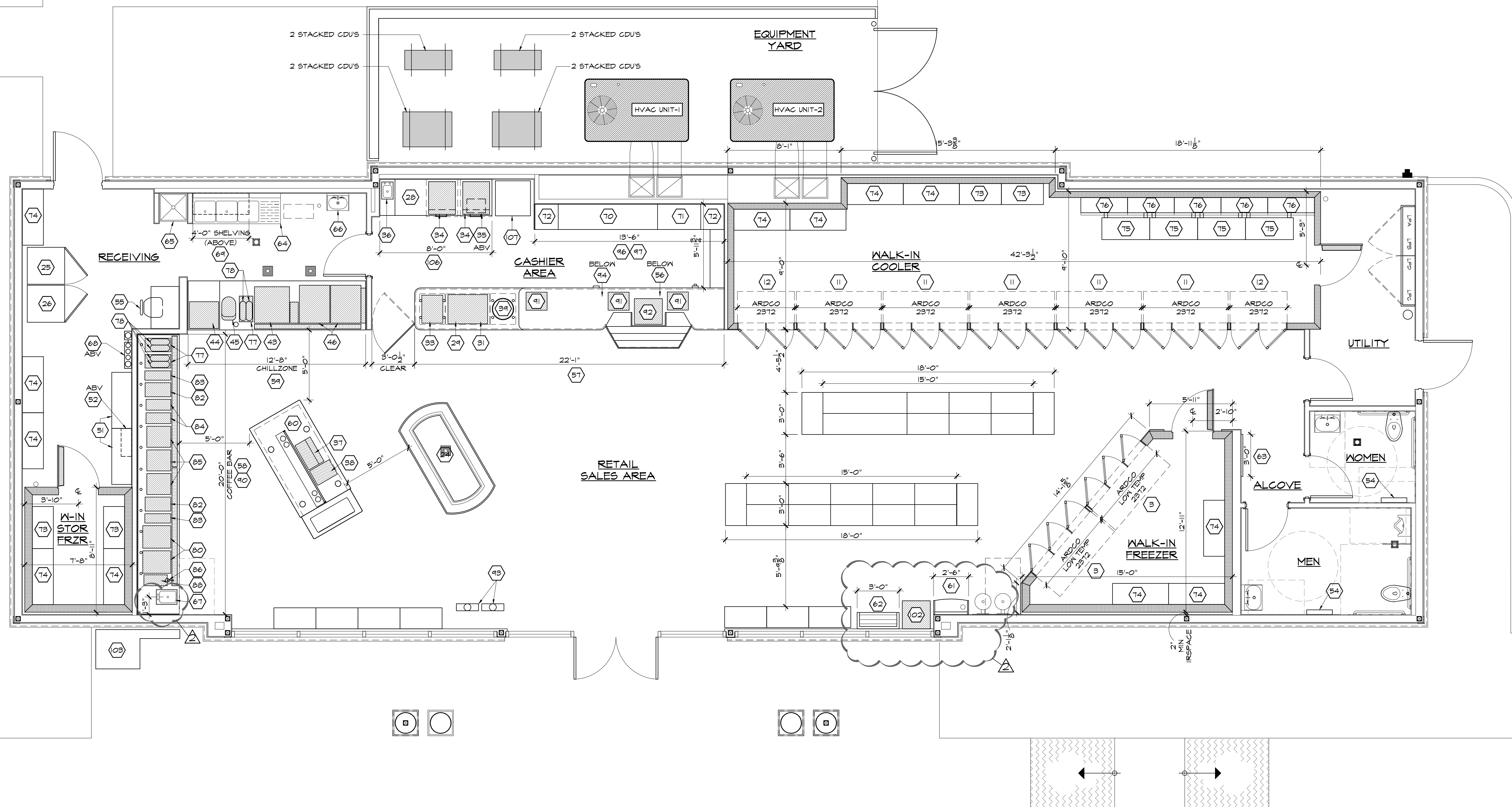


© AHARONIAN & ASSOCIATES INC 2012



GENERAL NOTES
1) SEE SHEET A1.5a FOR EQUIPMENT SCHEDULE.



**AHARONIAN
& ASSOCIATES INC.**
ARCHITECTS

310 George Washington Highway
Suite 100
Smithfield, Rhode Island
0 2 9 1 7
T 401-232-5010
F 401-232-5080
WWW.ARCH-ENG.COM

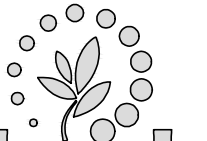
DISCLAIMER

OWNERSHIP AND USE OF DOCUMENTS, DRAWINGS AND SPECIFICATIONS ARE INSTRUMENTS OF PROFESSIONAL SERVICE AND SHALL REMAIN THE PROPERTY OF THE ARCHITECT. THESE DOCUMENTS ARE NOT TO BE USED, IN WHOLE OR IN PART, FOR ANY OTHER PROJECTS OR PURPOSES OR BY ANY OTHER PARTIES THAN THOSE PROPERLY AUTHORIZED BY CONTRACT WITHOUT THE EXPRESS WRITTEN AUTHORIZATION OF THE ARCHITECT.

REVISIONS

NUMBER	REMARKS	DATE
1	BUILDING DEPARTMENT COMMENTS	12/7/12

FOR PERMIT ONLY

PROJECT TITLE

**Cumberland
FARMS**
100 Crossing Blvd, Framingham, Massachusetts
STORE #
V0636
22905 S.R. 7

BOCA RATON, FL
Palm Beach County

DRAWING TITLE

EQUIPMENT PLAN

DATE AUG 29, 2012	PROJ NO 11117
DRAWN BY MD	CHECKED BY AZ

DRAWING NUMBER

A1.5

EQUIPMENT PLAN
SCALE: 1/4" = 1'-0"

